



# White River Military Coordination Alliance

---



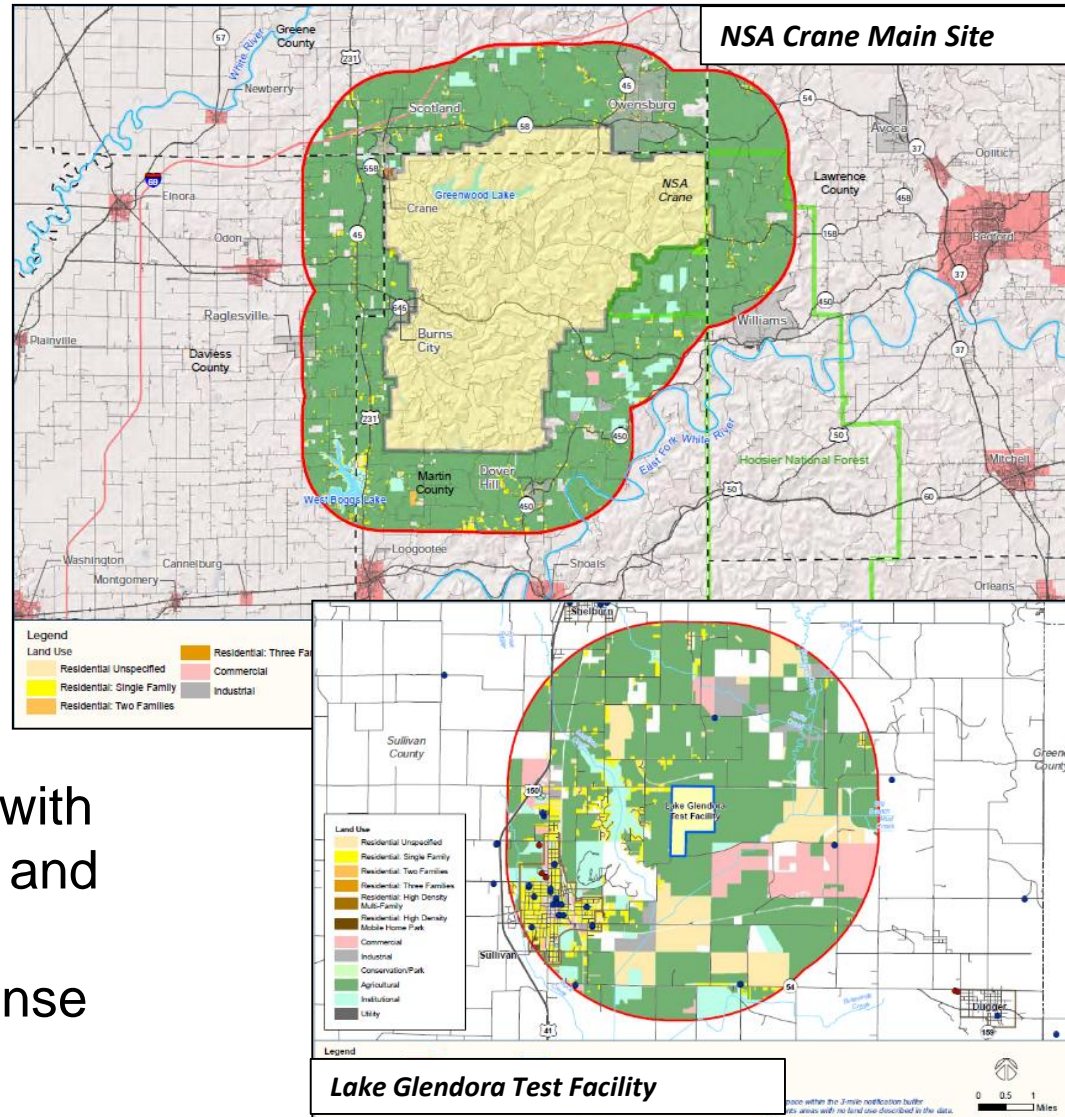


# White River Military Coordination Alliance

As a region, we benefit from Crane and we are committed to ensuring that we grow talent to meet the base's workforce needs.

We have infrastructure and available land for growth.

Our low cost of living, combined with a boost from the I-69 expansion, and the work at Crane makes us a destination of choice for the defense economy.



The logo features a circular emblem on the left containing a stylized, dark silhouette of a river or path winding through a landscape. To the right of the emblem, the text "White River Military" is stacked above "Coordination Alliance" in a bold, dark blue, sans-serif font. A horizontal line underlines the text.

# **White River Military Coordination Alliance**

---

**The relationship between Crane and the local communities is a healthy and symbiotic one.**

- The success of one is invariably linked to that of the other.
- Neither the local community nor Crane can afford the losses or costs associated with the loss of missions or lack of opportunity associated with new missions.

**Decisions by Crane, State and local government leadership have serious and real consequences for their mutual stakeholders.**

**As a region, we have the opportunity to build upon the strengths that exist today.**

The logo features a circular emblem on the left containing a stylized, dark silhouette of a river winding through a landscape. To the right of the emblem, the text "White River Military Coordination Alliance" is written in a bold, dark blue, sans-serif font. A horizontal line is positioned below the text.

# White River Military Coordination Alliance

---

## **Purpose: Build working relationships**

The Alliance (WRMCA) will work to establish effective and timely means of communication between communities within the region and Crane for the purpose of coordinating and addressing mutual concerns and issues.

The Alliance is comprised of state and local government representatives, regional and local economic development officials and Crane representatives. The creation of efficient and effective coordination among the Alliance members will provide:

- An opportunity for collaboration across boundaries.
- Value added from participating with fellow residents of the region.
- Improved awareness of local planning structures, resources, and knowledge.
- Maintain continuity and institutional knowledge for items of mutual concern and issues.
- Enhanced and formal communication between jurisdictions and Crane.
- Opportunity to address public resource sharing where economies of scale may prove beneficial.
- Greater public awareness of the Crane military mission.
- A forum for Crane to embrace regional initiatives taking place in surrounding communities

The logo features a circular emblem on the left containing a stylized, dark silhouette of a river winding through a landscape. To the right of the emblem, the text "White River Military Coordination Alliance" is written in a bold, dark blue, sans-serif font. The text is arranged in two lines: "White River Military" on the top line and "Coordination Alliance" on the bottom line. A horizontal line is positioned below the text.

# **White River Military Coordination Alliance**

---

**Function: Promote compatible development**

**Review and vote on matters related to supporting the adoption and implementation by military agencies and civilian governments measures to:**

- Protect the public health, safety and welfare
- Support economic prosperity of the region
- Safeguard the military mission
- Promote compatible development measures designed to minimize incompatible land development activities.

**This includes, but is not limited to: providing direction to staff, implementing Joint Land Use Study recommendations, and performing public outreach events.**

**Additionally, the Alliance will utilize the Stakeholder sub-committee to execute tasking.**

The logo features a circular emblem on the left containing a stylized, dark silhouette of a river or path winding through a landscape. To the right of the emblem, the text "White River Military" is written in a bold, dark blue font, and "Coordination Alliance" is written below it in a larger, bold, dark blue font. A horizontal line is positioned below the text.

# **White River Military Coordination Alliance**

---

**Funding: DoD Office of Economic Adjustment Grant in PROCESS to:**

Assist the participating JLUS jurisdictions transitioning the JLUS Policy Committee to a permanent Implementation Committee (the Alliance).

Develop and implement a practical, manageable, annual communications and outreach plan with Crane.

Design, host and update a public information website.

Establish baseline inventory of all properties and land use characteristics within a three-mile perimeter of NSA Crane and Lake Glendora Test Facility. Research and identify funding sources that can be utilized to implement encroachment safeguards via easements and other land use controls.



# White River Military Coordination Alliance

---

## Proposed Alliance Members:

### LEDOs

Martin  
Greene  
Lawrence  
Daviess  
Sullivan

### Agency/Region

OCRA  
IODD  
WGA  
ROI  
SIDC  
Radius

### Stakeholder Committee

Local Gov't Representative  
NSA Crane Representative  
IODD  
LEDO  
SIDC  
Radius  
OCRA

### County Representatives

Martin  
Greene  
Lawrence  
Daviess  
Sullivan

### Advisors

Indiana Farm Bureau  
INDOT  
IEDC  
SIBA

### City/Town Representatives

Bedford  
Crane  
Mitchell  
Washington  
Sullivan  
Odon  
Linton  
Loogootee  
Bloomfield  
Shoals

### Ex-Officio

NSA Crane CO  
NSA Crane CPLO



# **White River Military Coordination Alliance**

---

## **Meeting Schedule:**

**At least one meeting shall be held annually by the Alliance, but the Alliance shall meet as often as necessary for the purpose of transacting the business at hand.**

- Regular meetings shall be held on the third Monday of a month at 1:30 p.m. (for example), or as designated by the Alliance, and will be hosted on a rotating basis by the Alliance members.

**At least once per year the Alliance should provide briefings to Crane / Lake Glendora Test Facility leadership of changes within the Alliance membership communities.**

- Plans that may impact the installation including comprehensive plans, master plans, transportation plans, zoning, development projects, and capital improvement plans.

**At least once per year Alliance will request Crane / Lake Glendora Test Facility installation leadership present a “state of the installation” briefing.**

- Plans that include strategic goals, operational changes, and proposed construction projects that may impact the Alliance membership.





# White River Military Coordination Alliance

---

## Contact:

Matt Craig  
Director of Crane Community Support  
Radius Indiana  
[m.craig@radiusindiana.com](mailto:m.craig@radiusindiana.com)  
812-508-2375

Brandi Hughes  
Deputy Director  
Indiana Office of Defense Development  
[bhughes@iodd.in.gov](mailto:bhughes@iodd.in.gov)  
317-601-3429

