

Scotland Meadows Business & Tech Park at WestGate@Crane Technology Park

Property Report (Scotland Meadows Business & Tech Park at WestGate@Crane Technology Park)



Property Details

Site/Building Name	Scotland Meadows Business & Tech Park at WestGate@Crane Technology Park
Street Address	NWC C.R. 770 South & C.R. 200 East
City	Newberry
County	Greene County
Zip Code	47449
Type of space	Mixed Use, Office, Flex, Business Park, Light Mfg
Min Size	2 acres
Max Size	7.23 acres
Last Updated	4/10/2014

Contact Information

Company	Greene County Economic Development Corporation
Contact Name	Brianne Jerrels
Address	4513 West State Road 54
City	Bloomfield
State	Indiana
Phone	812-659-2109
Email	bjjerrels@insidegreencounty.com
Website	www.insidegreencounty.com



Availability

For Sale	Yes
Sale Terms	Price: \$16,500-\$20,000 per Lot. Lots range in size from 2.0 acres to 2.81 acres. Various Lots can be combined. Subject to Covenants, Conditions and Restrictions agreement.
Sale Price	\$ 20,000.00
Total Size	13.78 Acres

Site Details

Shovel Ready	Yes
Featured Site Description	Shovel Ready
Alta Date	December 12, 2009
Lot Size	Varies by Lot: 2a to 2.81a
Alta Survey	Yes
Contiguous Acres Available for Development	7.23; 4.36 and 2.19
Tech Park	Yes
Total Acres	13.78 acres
Site Description	6 Lots available for purchase; variety of combinations

Transportation

Interstate Name	I-69
Distance to Interstate	2.2 miles
Highway Description	2 Lane Highway
Nearby Highway	231/58
Distance to Nearest Highway	2.2 miles
Nearest International Airport	Indianapolis International Airport
Distance to Nearest Airport	77 miles
Regional Airport Name	Monroe County Airport
Distance to Regional Airport	30 miles
Regional Airport Runway Length	6500 ft

Utilities

Electric	Yes
Electric Provider	UDWI/REMC
Natural Gas	Yes
Natural Gas Provider	Vectren
Sewer	Yes
Sewer Provider	Greene County Regional Sewer District
Water	Yes
Water Provider	Eastern Heights Utilities

Other

Ownership	Greene County Redevelopment Commission
Tax District Name	Taylor Township
Tax District Number	28019

Incentives

Foreign Trade Zone	Yes
Economic Revitalization Area	Yes
Tax Increment Financing Area (TIF)	Yes

Contacts

Alternate Contact Name	Halea Franklin
Alternate Contact Company	Greene County Economic Development
Alternate Contact Phone	812-659-2109
Alternate Contact Address	4513 W State Road 54 East
Alternate Contact City	Bloomfield
Alternate Contact Zip	47424
Alternate Email Address	hfranklin@insidegreeneconomy.com

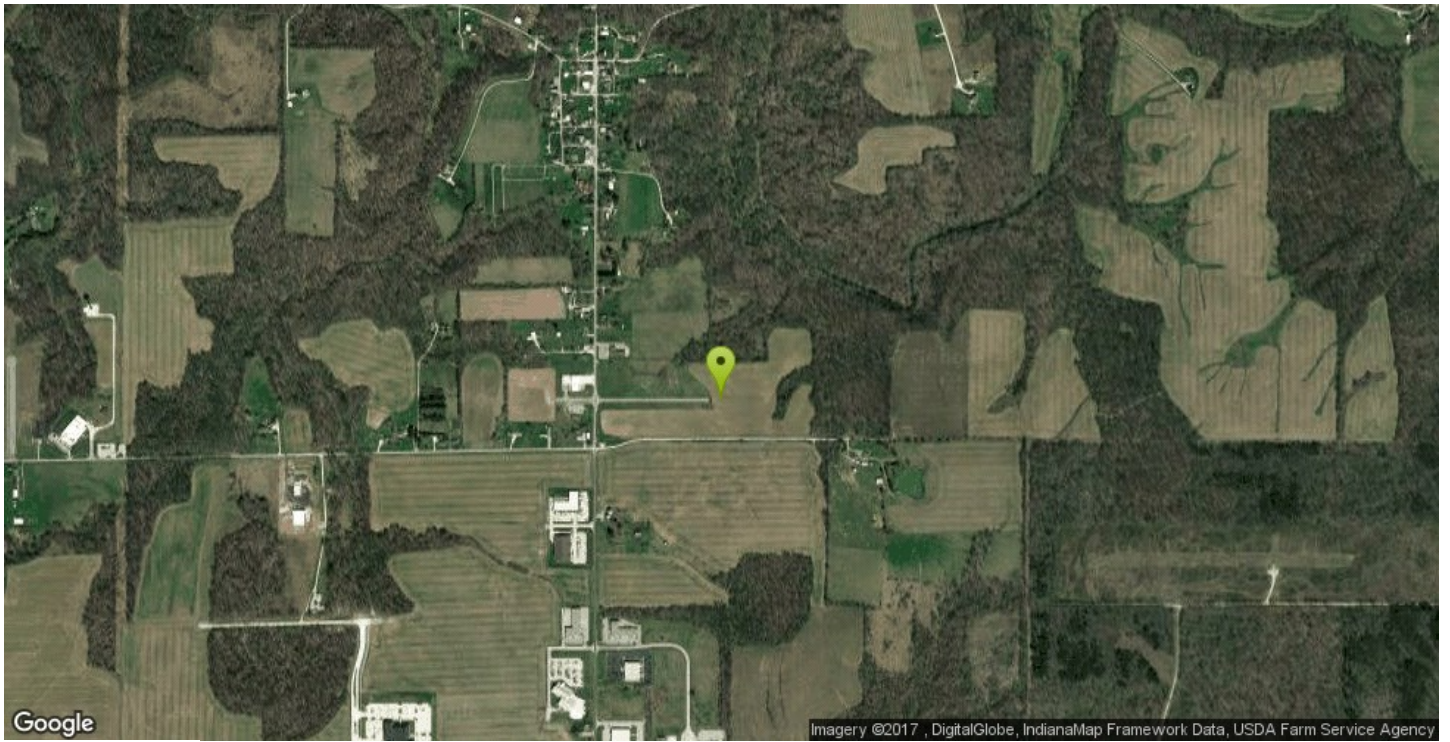
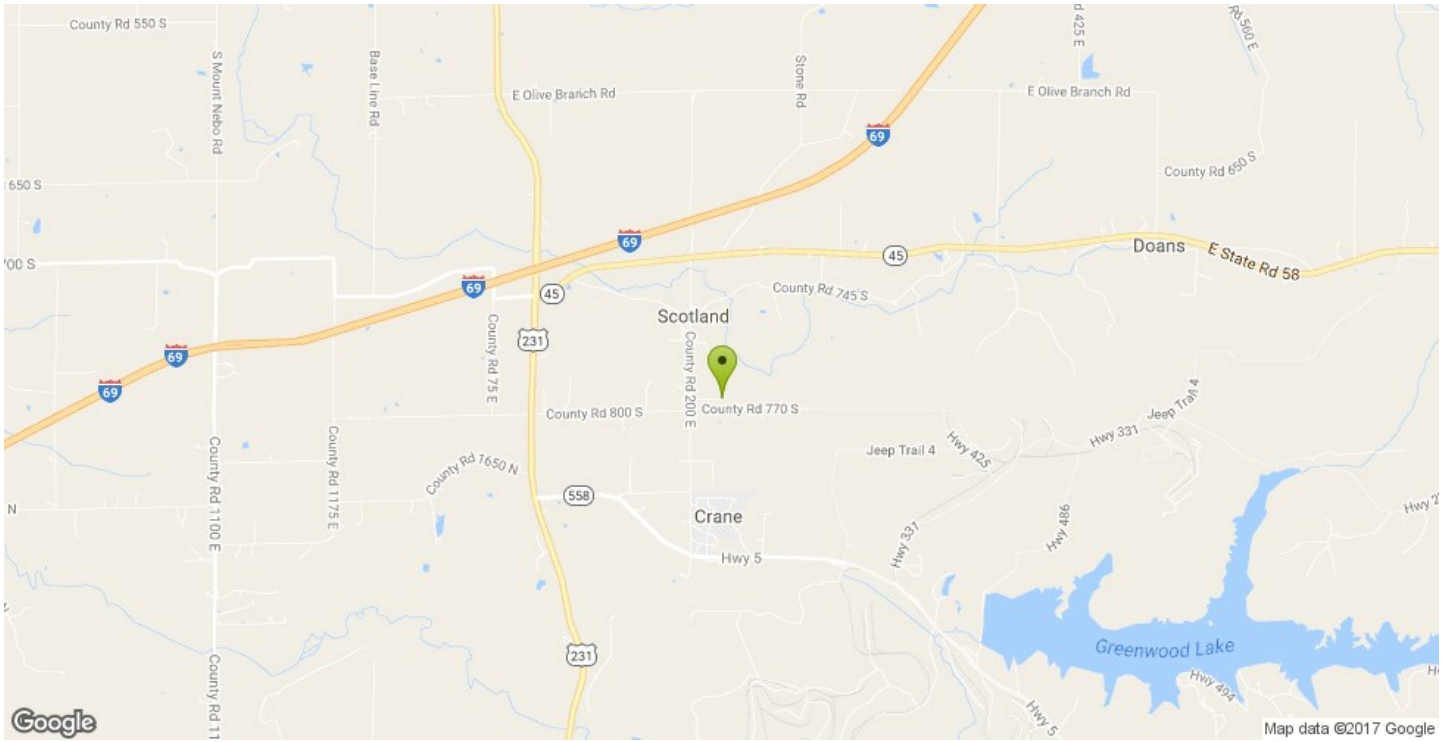
Description

IEDC Certified Shovel Ready Site. Property is owned by Greene County Redevelopment Commission to develop the [WestGate@Crane](#) Technology Park. Price: \$16,500-\$20,000 per Lot. Lots 1,2 & 3 and Lots 6-7 can be combined; Lot 8 separate due to drainage easement. Located within 1.2 miles of I-69.

Attachments

- [Scotland Meadows Plat Revision Sht 1 - 11-27-13.pdf](#)
- [Greene-County-Tourism-Map.pdf](#)
- [Pricing_GC Sites.pdf](#)
- [Greene County Snapshot.pdf](#)

NWC C.R. 770 South & C.R. 200 East



NWC C.R. 770 South & C.R. 200 East



